

LIGHTPLATE CONNECTOR 90-42301

AvtechTyee's 90-42301 Lightplate Connector provides isolated two circuit power to a mated lightplate. The connector has a floating feature to enhance and facilitate lightplate installation. Six different configurations of the 90-42301 series are offered for three panel sizes (.062", .090" and .125") and two different terminations, either spade/snap on or ring tongue terminals.



PCB PIN LIGHTPLATE CONNECTOR

The 90-42305 connector also has a spring for low force ejection of the lightplate plug and mates with MS90335 lightplate plugs.

- Provides isolated two circuit power to mated lightplates
- Connector "floats" thereby facilitating mating of subassemblies
- Connector is spring loaded for low force ejection of the lightplate plug
- Mates with MS90335 lightplate plugs
- Options available for panel thicknesses of 0.062", 0.090" and 0.125"
- Two different terminations are offered

Part Number	Panel Thickness	Termination Style
90-42301-5	0.062" thick	Ring Tongue Terminals
90-42301-6	0.125" thick	Ring Tongue Terminals
90-42301-7	0.062" thick	Spade Snap On
90-42301-8	0.125" thick	Spade Snap On
90-42301-9	0.090" thick	Ring Tongue Terminals
90-42301-10	0.090" thick	Spade Snap On



Since 1969 AvtechTyee has been a leader in the design, development, and manufacture of electronic systems for the aerospace industry, with a focus in three product groups: Audio, Avionics and Structures.

AvtechTyee products are flying onboard 42 aircraft types within the air transport, regional commuter, and business jet sectors, serving 450 customers in 49 countries of the world.

Our versatility in supporting aerospace electronics requirements ranges from the custom design and manufacturing of complex power supplies to complete Digital Audio Systems.

AvtechTyee is certified to ISO9001, AS9100 and the FAA's ACSEP. Product Support includes in-house repair services (FAA approved Repair Station #IG6R621N), loaner/exchange programs, and both in-house and offsite airline training.

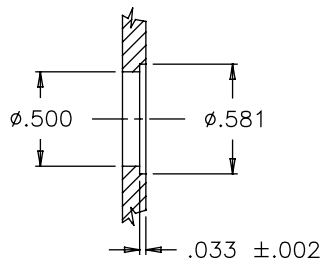
AvtechTyee Corporation

6500 Merrill Creek Parkway
Everett, Washington 98203

www.AvtechTyee.com
info@AvtechTyee.com
Tel: (425) 290-3100
Fax: (425) 513-6474

© AvtechTyee Corporation, 2018

SUGGESTED PANEL CUT-OUT

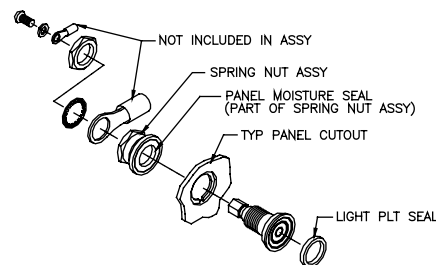


DETAIL 1

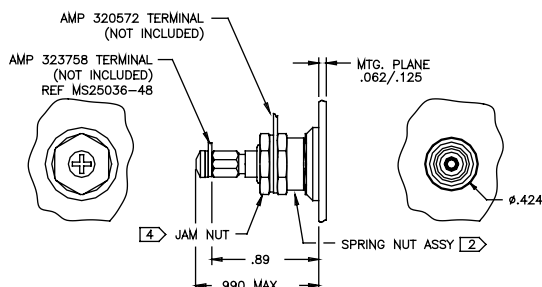
RECOMMENDED CUTOUT FOR ALL PANELS
(SHOWN SECTIONED THRU)

TYPICAL INSTALLATION

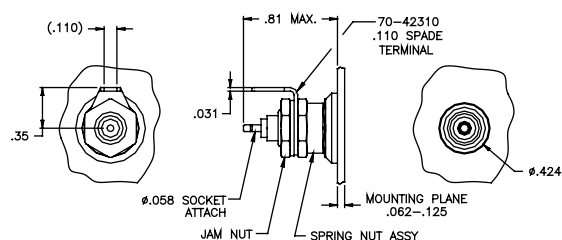
Terminal Style 1



TERMINATION STYLES



TERMINATION STYLE 1
RING TONGUE TERMINALS
(-1 SHOWN REF. TABLE 1)



TERMINATION STYLE 2
SPADE/SNAP-ON
(-3 SHOWN REF. TABLE 1)

ELECTRICAL REQUIREMENTS

Characteristic	Description
Radial Float	.010 to .015 inches
Axial Grip on Mounting Plate	3 to 5 pounds force
Lightplate Mating Force	4 lbs. Max.
Lightplate Extraction Force	2 lbs. Max.

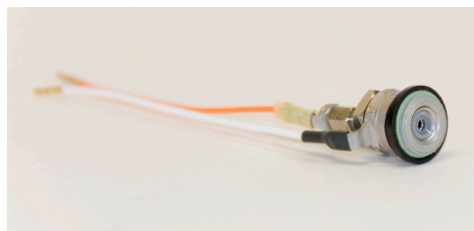
MATERIALS FINISHES

Material	Finish
Body	Brass per QQ-B-626 Plated QQ-N-290 (nickel)
Center Contact	Berylco 25 plated MIL-C-26074 (Nickel)
Spring Nut and Jam Nut	Brass per QQ-B-626 plated QQ-N-290 (Nickel)
Float/Insulator	ACETAL

Requirement	Value	Units
Operating Voltage	5 or 28 5 or 115	Vdc VAC
Output Current	3 Amp 1 Amp	5 or 28 Vdc 120 VAC
Insulation Resistance	50	Mohms
Dielectric Withstanding Voltage (Between insulated circuits)	1200	Vac 60Hz for 1 minute
Dielectric Withstanding Voltage (Between circuits and panel)	1500	Vac 60Hz for 1 minute
Contact Resistance	50	milliohms max



6500 Merrill Creek Parkway
Everett, Washington 98203
www.AvtechTyee.com
info@AvtechTyee.com
Tel: (425) 290-3100
Fax: (425) 513-6474



Optional wire pigtails can be installed on the lightplate connector, contact Avtech for additional details